
Jeanne and Ed Tiedemann's
Diving Center
56 Gardiners Avenue
Levittown, NY 11753
Phone: 516-796-6560
www.TDCOnline.com

Tiedemann's Diving Center

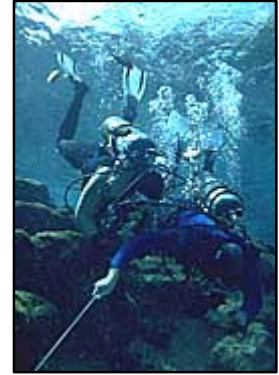
CAVERN DIVER

January 13th – January 15th, 2008

For divers in the Northeast the phrase "Wreck Dive" is the one that fires our imagination most. We have some of the most interesting wreck dives a short distance from our Long Island shores.

Using the expertise gained in a **Cavern Diving** course, will help to make you the very best wreck diver you can be. Cavern and Cave divers are simply the best-trained divers out there.

This program, which teaches us how to deal with an overhead environment, helps us when we are wreck diving. It also opens up a whole new world that can be found in Central Florida, Mexico and the Caribbean.



But even if you don't plan on doing much Wreck or Cavern diving, the skills and disciplines taught in this course, like equipment streamlining, buoyancy control and propulsion techniques will help you to dive in a more environmentally sensitive manner around reefs and other fragile aquatic life.



This course develops the skills and knowledge necessary for safe cavern diving which include: Primary reel use, alternative propulsion techniques, buoyancy control, touch contact communication and air-sharing procedures. Special emphasis in this unique environment include anti-silting techniques, dealing with entanglements, equipment modification and emergency procedures.

To qualify for this course, you must possess Advanced Certification, above-average buoyancy skills and be ready for some *intense* training.

The cost of the program will be approximately **\$370.00** and includes:

- ✓ 3 nights accommodations - based on double occupancy
- ✓ Two day Cavern course
- ✓ All classroom lectures
- ✓ 4 Cavern dives
- ✓ Ginnie Springs entrance fees
- ✓ NACD certification card and processing fees
- ✓ Air fills (hyper-filtered/O₂ compatible)

Each student is required to purchase the *NACD Cavern/Cave Diver Student Workbook*.

A deposit of **\$50.00** is due as soon as possible to secure your spot for this course. This course requires a **minimum of 2 students – maximum 4 students**. With only 2 students, the course cost increases by \$50.00. If taking this course in conjunction with our *Introduction to Cave / Basic Cave Diver* course, a deposit of **\$100.00** will be due.

Register by phone or in person at Tiedemann's Diving Center. Any questions? – Just give us a call at 516-796-6560.

CLASS SIZE IS LIMITED TO 4 STUDENTS – SIGN UP TODAY!

Jeanne and Ed Tiedemann's
 Diving Center
 56 Gardiners Avenue
 Levittown, NY 11753
 Phone: 516-796-6560
 www.TDCOnline.com

Tiedemann's Diving Center
Cavern and Cave Diving
Equipment Requirements



Key: A=Acceptable for use, H=Highly Recommended, R=Required, #=Quantity or item required

*** Equipment that can be rented in Florida.**

Equipment	Cavern Diver	Intro to Cave / Basic Cave Diver	Apprentice / Full Cave Diver
2 Tanks (85cuft or larger) *	R		
2 Tanks (85cuft or larger) with Dual-orifice (Y or H) tank valves *	H	R	
Doubles (85cuft tanks or larger) * <i>Required for Basic Cave Diver certification</i>	A	A/R	R
Regulator with Primary and Secondary second stages	R		
Regulator with a Primary second stage		R	R
An additional regulator (with first and second stages) for use with doubles		R	R
7-foot regulator hose	R	R	R
Full wet suit with hood and boots	A	A	A
Drysuit (with P-valve)	H	H	H
BCD or backplate and wing with power inflator	R	R	R
Pressure gauge	R	R	R
Bottom timer or dive computer and dive tables	R	R	R,2
Depth gauge with MDI	R	R	R
Weight belt and weights if necessary	A	A	A
Wrist Slate			R
Primary dive light (may be rechargeable but non-lantern or pistol-grip style)	H	R	R
Small Backup light (non-rechargeable, non-lantern or pistol-grip style)	R	R,2	R,2
Primary cave-diving reel with approximately 350-400 feet of guideline	H	R	R
Safety reel or line spool (minimum of 140ft of line)	R	R	R
Jump/Gap reel or line spool (minimum of 50ft of line)			R,2
Cutting tools	R	R	R,2
Line Arrows		R,3	R,5
Line Markers (Cookies)		R,2	R,2
O ₂ Clean Deco bottle (30 cuft min) *			R
O ₂ Clean Dedicated Deco Regulator with minimum 39" regulator Hose and pressure gauge (on 6" HP hose recommended)			R
Dive Accident Insurance	R	R	R

It is also strongly encouraged that you discuss the suitability of the equipment you own with the course coordinator Jim Vafeas before bringing it to class. Equally important, do not purchase any new equipment for Cavern or Cave Diver training without discussing it with us first. Equipment that isn't right can distract from your enjoyment of Cavern and Cave Diving, and interfere with the learning process. In some instances, it can actually be unsafe. Please contact the course coordinator Jim Vafeas with all your equipment questions and concerns at 631-756-0924.